



# NX-5700/5800/5900

VHF/UHF/700/800MHz Digital & FM Analog Mobile Radios

## STANDARD

### GENERAL FEATURES

- 50 W (136-174 MHz) Models
- 45 W (380-470, 450-520 MHz) Models
- 35 W (700/800 MHz) Models
- 1024 CH-GID / 128 Zones
- Full Color 2.55" (154 x 422 pixels) TFT Display
- Multi-line Text Display
- Function/Status Icons
- Multi-Language Display
- Date & 12/24 Hour Time Clock
- Transmit/Busy/Call Alert/Warn LED
- Emergency/AUX Key
- 4W Speaker Audio
- DB-25 Accessory Connector
- Emergency Call Features
- Built-in GPS Receiver
- Built-in Bluetooth® Module
- Built-in 56-bit DES Encryption (4 keys programmable by KPG-D1K)
- Active Noise Reduction (ANR)
- KPG-D1K Windows® FPU
- Flash Firmware Upgrading
- MIL-STD-810 C/D/E/F/G
- IP54/55

### DIGITAL – NXDN® MODE

- NXDN® Conventional
- NXDN® TYPE-C Trunking (except 700MHz)
- AMBE+2™ VOCODER
- 6.25 & 12.5 kHz Channels
- Over-the-Air Alias
- Over-the-Air Programming (requires KPG-180AP OTAP Manager Software)
- Paging Call
- Emergency Call
- All Group Call
- Status Messaging
- Remote Stun/Kill/Check
- Short & Long Data Messages
- GPS Location
- NXDN® Scrambler

### ANALOG MODE

- Conventional Zones
- LTR® Zones
- FleetSync®/II: PTT ID ANI, Caller ID Display, Selective/Group Call, Emergency Status, Text Messages
- MDC-1200: PTT ID ANI, Caller ID Display, Emergency, Radio Check & Inhibit
- QT / DQT
- Two-Tone (Conventional Zones Only)
- DTMF
- Built-in Voice Inversion Scrambler



### NX-5000(K-version\*) Mobiles include:

- Standard Microphone (KMC-35)
- Mounting Bracket (KMB-33M)
- DC Cable (KCT-23M)
- Blade Fuse
- User Guide

\*BK-version comes with an RF deck only

## OPTIONAL

### GENERAL FEATURES

- 4000 Channel (KWD-5000CH License Key Activation required)
- Front Panel Programming (KWD-5001FP License Key Activation required)
- microSD/microSDHC Memory Card Slot (KWD-5002SD License Key Activation required)
- Built-in Bluetooth® Module for Data (KWD-5003BT License Key Activation required)
- 256-bit AES Encryption (KWD-AE30K/31K Encryption Module required)

### DIGITAL – P25 MODE

- Conventional Features (KWD-5100CV License Key Activation required)
- Phase 1 Trunking Features (KWD-5100CV & 5101TR License Keys Activation required)
- Phase 2 Trunking Features (KWD-5100CV & 5101TR & 5102TR License Keys Activation required)
- Conventional OTAR (KWD-5103RK License Key Activation required)
- Trunking OTAR (KWD-5103RK & 5106DT License Keys Activation required)
- Conventional Voting Scan (KWD-5105VT License Key Activation required)
- Packet Data required for Trunked OTAR/GPS (KWD-5106DT License Keys Activation required)

### MOUNTING & REMOTE CONFIGURATIONS

(Order L-5029–L-5038 for KENWOOD Factory assembling)

- KCH-20R Featured Control Head
- Single Remote Control Head (KRK Kit & KCT-71 Cable required)
- Dual Remote Control Heads (KCH-19/20R & KRK Kit & KCT-71 Cables required)
- Multiple RF Decks (KRK Kit & KCT-71 Control Cable + KWD-5004MR License Key Activation required)



## RADIO (includes: KCH-19M, KMC-35, KMB-33M, and KCT-23M)

|           |   |
|-----------|---|
| NX-5700K  | VHF (136-174MHz), 50 Watts NXDN Conventional / TYPE-C Trunking        |
| NX-5800K  | UHF (450-520MHz), 45 Watts NXDN Conventional / TYPE-C Trunking        |
| NX-5800K2 | UHF (380-470MHz), 45 Watts NXDN Conventional / TYPE-C Trunking        |
| NX-5900K  | 700 / 800 MHz, 30/35 Watts NXDN Conventional / 800MHz TYPE-C Trunking |

## RF Deck Only

**MUST purchase necessary accessories separately**

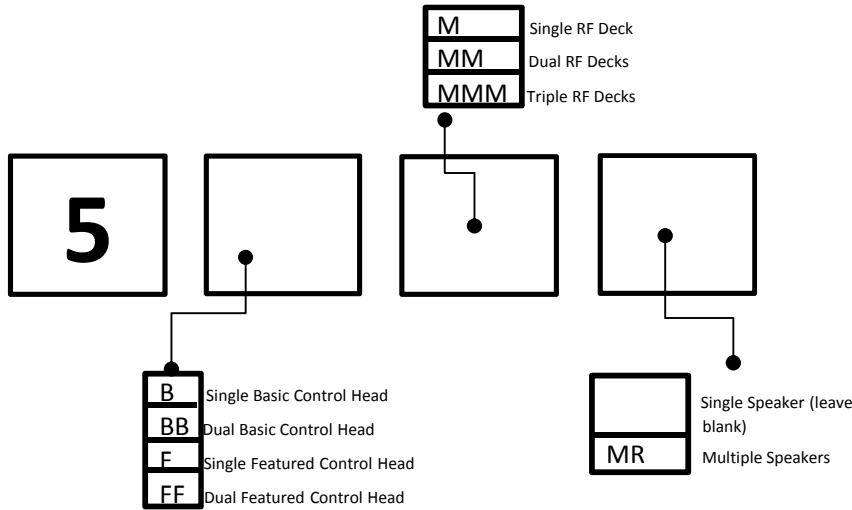
|            |   |
|------------|---|
| NX-5700BK  | NX-5700K (50W, 136-174 MHz) RF Deck Only<br>(KCH-19 Control Head, KMC-35 Microphone, KMB-33 Bracket, KCT-23 DC Cable not included)  |
| NX-5800BK  | NX-5800K (45W, 450-520 MHz) RF Deck Only<br>(KCH-19 Control Head, KMC-35 Microphone, KMB-33 Bracket, KCT-23 DC Cable not included)  |
| NX-5800BK2 | NX-5800K2 (45W, 380-470 MHz) RF Deck Only<br>(KCH-19 Control Head, KMC-35 Microphone, KMB-33 Bracket, KCT-23 DC Cable not included) |
| NX-5900BK  | NX-5900K (35W, 700/800 MHz) RF Deck Only<br>(KCH-19 Control Head, KMC-35 Microphone, KMB-33 Bracket, KCT-23 DC Cable not included)  |



# NX-5700/5800/5900

VHF/UHF/700/800MHz Digital & FM Analog Mobile Radios

## ACCESSORY CONFIGURATION KITS



\* Multiple Speaker configurations allow simultaneous monitoring of multiple RF Decks.

### Single Deck Single Head Remote Mount

5BM KCH-19M, KRK-14HM, KRK-15BM, KCT-71M2, KCT-23M3, KMB-33M, KMC-35

5FM KCH-20RM, KRK-15BM, KCT-71M2, KCT-23M3, KMB-33M, KMC-35, KES-5, KCT-72M

L-5029 Package Single Deck Single Head Remote  
(MUST purchase NX-5x00(B) RF Deck and the Kit with this labor for full installation).

### Single Deck Dual Head Remote Mount

5BBM KCH-19M(x2), KRK-14HM(x2), KRK-15BM, KCT-71M2(x2), KCT-23M3, KMB-33M, KMC-35(x2)

5FFM KCH-20RM(x2), KRK-15BM, KCT-71M2(x2), KCT-23M3, KMB-33M, KMC-35(x2), KES-5(x2), KCT-72M(x2)

L-5030 Package Single Deck Dual Head Remote  
(MUST purchase NX-5x00(B) RF Deck and the Kit with this labor for full installation).

### Dual Deck Single Head Single Speaker Remote Mount

5BMM KCH-19M, KRK-14HM, KRK-15BM(x2), KCT-71M2, KCT-71M4, KCT-23M3(x2), KMB-33M(x2), KMC-35

5FMM KCH-20RM, KRK-15BM(x2), KCT-71M2, KCT-71M4, KCT-23M3(x2), KMB-33M(x2), KMC-35, KES-5, KCT-72M

L-5031 Package Dual Deck Single Head Remote  
(MUST purchase NX-5x00(B) RF Decks and the Kit with this labor for full installation).  
**Note: MUST submit the Remote Mount Configuration Request Form.**

### Dual Deck Single Head Dual Speaker Remote Mount

5BMM-MR KCH-19M, KRK-14HM, KRK-15BM(x2), KCT-71M2, KCT-71M4, KCT-23M3(x2), KMB-33M(x2), KMC-35, KES-5(x2), KAP-2(x2)

5FMM-MR KCH-20RM, KRK-15BM(x2), KCT-71M2, KCT-71M4, KCT-23M3(x2), KMB-33M(x2), KMC-35, KES-5(x2), KAP-2(x2)

L-5032 Package Dual Deck Single Head Dual Speaker Remote  
(MUST purchase NX-5x00(B) RF Decks and the Kit with this labor for full installation).  
**Note: MUST submit the Remote Mount Configuration Request Form.**

NEXEDGE®



# NX-5700/5800/5900

VHF/UHF/700/800MHz Digital & FM Analog Mobile Radios

### Dual Deck Dual Head Single Speaker Remote Mount

|        |   |
|--------|---|
| 5BBMM  | KCH-19M(x2), KRK-14HM(x2), KRK-15BM(x2), KCT-71M2(x2), KCT-71M4, KCT-23M3(x2), KMB-33M(x2), KMC-35(x2)  |
| 5FFMM  | KCH-20RM(x2), KRK-15BM(x2), KCT-71M2(x2), KCT-71M4, KCT-23M3(x2), KMB-33M(x2), KMC-35(x2), KES-5(x2), KCT-72M(x2)   |
| L-5033 | Package Dual Deck Dual Head Single Speaker Remote<br>(MUST purchase NX-5x00(B) RF Decks and the Kit with this labor for full installation)<br><b>Note: MUST submit the Remote Mount Configuration Request Form.</b> |

### Dual Deck Dual Head Dual Speaker Remote Mount

|          |   |
|----------|---|
| 5BBMM-MR | KCH-19M(x2), KRK-14HM(x2), KRK-15BM(x2), KCT-71M2(x2), KCT-71M4, KCT-23M3(x2), KMB-33M(x2), KMC-35(x2), KES-5(x2), KAP-2(x2)  |
| 5FFMM-MR | KCH-20RM(x2), KRK-15BM(x2), KCT-71M2(x2), KCT-71M4, KCT-23M3(x2), KMB-33M(x2), KMC-35(x2), KES-5(x2), KAP-2(x2)   |
| L-5034   | Package Dual Deck Dual Head Dual Speaker Remote<br>(MUST purchase NX-5x00(B) RF Decks and the Kit with this labor for full installation)<br><b>Note: MUST submit the Remote Mount Configuration Request Form.</b> |

### Triple Deck Single Head Single Speaker Remote Mount

|        |   |
|--------|---|
| 5BMMM  | KCH-19M, KRK-14HM, KRK-15BM(x3), KCT-71M2, KCT-71M4(x2), KCT-23M3(x3), KMB-33M(x3), KMC-35  |
| 5FMMM  | KCH-20RM, KRK-15BM(x3), KCT-71M2, KCT-71M4(x2), KCT-23M3(x3), KMB-33M(x3), KMC-35, KES-5, KCT-72M   |
| L-5035 | Package Triple Deck Single Head Single Speaker Remote<br>(MUST purchase NX-5x00(B) RF Decks and the Kit with this labor for full installation)<br><b>Note: MUST submit the Remote Mount Configuration Request Form.</b> |

### Triple Deck Single Head Triple Speaker Remote Mount

|          |   |
|----------|---|
| 5BMMM-MR | KCH-19M, KRK-14HM, KRK-15BM(x3), KCT-71M2, KCT-71M4(x2), KCT-23M3(x3), KMB-33M(x3), KMC-35, KES-5(x3), KAP-2(x3)  |
| 5FMMM-MR | KCH-20RM, KRK-15BM(x3), KCT-71M2, KCT-71M4(x2), KCT-23M3(x3), KMB-33M(x3), KMC-35, KES-5(x3), KAP-2(x3)   |
| L-5036   | Package Triple Deck Single Head Triple Speaker Remote<br>(MUST purchase NX-5x00(B) RF Decks and the Kit with this labor for full installation)<br><b>Note: MUST submit the Remote Mount Configuration Request Form.</b> |

### Triple Deck Dual Head Single Speaker Remote Mount

|        |   |
|--------|---|
| 5BBMMM | KCH-19M(x2), KRK-14HM(x2), KRK-15BM(x3), KCT-71M2(x2), KCT-71M4(x2), KCT-23M3(x3), KMB-33M(x3), KMC-35(x2)  |
| 5FFMMM | KCH-20RM(x2), KRK-15BM(x3), KCT-71M2(x2), KCT-71M4(x2), KCT-23M3(x3), KMB-33M(x3), KMC-35(x2), KES-5(x2), KCT-72M(x2)   |
| L-5037 | Package Triple Deck Dual Head Single Speaker Remote<br>(MUST purchase NX-5x00(B) RF Decks and the Kit with this labor for full installation)<br><b>Note: MUST submit the Remote Mount Configuration Request Form.</b> |

### Triple Deck Dual Head Triple Speaker Remote Mount (MUST be KENWOOD Assembled)

|           |   |
|-----------|---|
| 5BBMMM-MR | KCH-19M(x2), KRK-14HM(x2), KRK-15BM(x3), KCT-71M2(x2), KCT-71M4(x2), KCT-23M3(x3), KMB-33M(x3), KMC-35(x2), KES-5(x3), KAP-2(x3)  |
| 5FFMMM-MR | KCH-20RM(x2), KRK-15BM(x3), KCT-71M2(x2), KCT-71M4(x2), KCT-23M3(x3), KMB-33M(x3), KMC-35(x2), KES-5(x3), KAP-2(x3)   |
| L-5038    | Package Triple Deck Dual Head Triple Speaker Remote<br>(MUST purchase NX-5x00(B) RF Decks and the Kit with this labor for full installation)<br><b>Note: MUST submit the Remote Mount Configuration Request Form.</b> |



# NX-5700/5800/5900

VHF/UHF/700/800MHz Digital & FM Analog Mobile Radios

## FRONT PANELS & REMOTE KITS

|          |   |
|----------|---|
| KCH-19M  | Basic Control Panel   |
| KCH-20RM | Full Featured Remote Control Panel<br><b>Note:</b> Remote configuration only. No Internal Speaker included. KES-5/3S is required. |
| KRK-14HM | Control Head Interface Kit for KCH-19M  |
| KRK-15BM | Control Head Remote Kit for a RF Deck   |

## CABLES

|          |   |
|----------|---|
| KCT-71M2 | Remote Control Cable (17 feet)                                  |
| KCT-71M3 | Remote Control Cable (25 feet)                                  |
| KCT-71M4 | Remote Control Cable (1.6 feet)                                 |
| KCT-23M  | DC Cable (35-50W Dash mount; pos/neg. 10 ft. leads)             |
| KCT-23M3 | DC Cable (35-50W Remote mount; pos.23 ft.; neg. 3.3. ft. leads) |

## MOBILE INSTALLATION ACCESSORIES

|          |   |
|----------|---|
| KAP-2    | Horn Alert/P.A. Relay Option  |
| KCT-46   | Ignition sense cable (plugs directly into mobile chassis ignition sense line) |
| KCT-72M  | External Accessory Connection Cable for KCH-19M / KCH-20RM                    |
| KLF-2    | Line Filter (suppresses alternator whine, 25dB, 25A max).                     |
| KMB-10   | Key lock adapter  |
| KMB-33M  | Standard Mounting Bracket   |
| KPS-15   | DC Switching Power Supply (117/230 VAC; 23A max. continuous, 25A peak)        |
| KRA-40GM | GPS Antenna   |

## CONTROL STATION INSTALLATION ACCESSORIES

|        |  |
|--------|--|
| KMC-9C | Control Station Desktop Microphone (8-pin mod. plug)<br><b>Note: NOT compatible with TDMA operations</b>                                   |
| KMB-34 | Control Station Mounting Case for KPS-15 Power Supply and Portables (excludes TK-5x10/6110 series).<br>(mobile mounting hardware included) |
| KPS-15 | DC Switching Power Supply (117/230 VAC; 23A max. continuous, 25A peak)   |

## MICROPHONES AND SPEAKERS

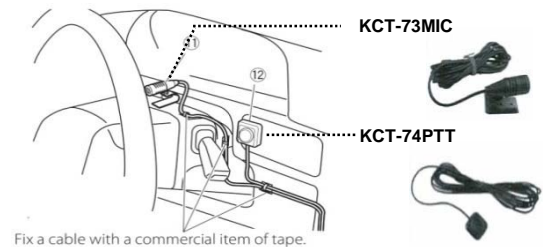
|           |  |
|-----------|--|
| KMC-35    | MIL-SPEC Standard electret mobile microphone (8-pin mod. plug)   |
| KMC-36    | MIL-SPEC Standard electret mobile microphone with 12 keypad (8-pin mod. plug)  |
| KES-3S    | External speaker (compact low profile; black case; 3.5 mm phono plug-in)   |
| KES-5     | External speaker, 40W max input<br><b>Note:</b> requires KAP-2 (PA/HA unit) or KCT-72M (connection cable) installed. |
| KCT-73MIC | External Microphone kit w/ 9.8 ft. cord for Safer Driving  |
| KCT-74PTT | External PTT Switch kit w/ 9.8 ft cord for Safer Driving   |

### Hands-free operation

To promote driver safety and meet hands-free regulations in certain regions, NX-5000 series mobile offers external microphone and PTT as options.

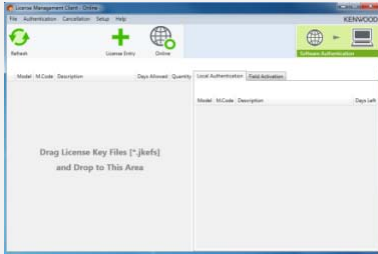
**NOTE:** Connecting to the radio via DB25 terminal on backside of RF Deck or via optional KCT-72 "Connection Cable" on backside of KCH-19M and KCH-20R\*.

KCT-73MIC is not compatible with other NX/TK-mobile radios.



**NEXEDGE®**  
**P25**  
**NX-5700/5800/5900**  
 VHF/UHF/700/800MHz Digital & FM Analog Mobile Radios

**LICENSING SYSTEM**



**KPT-300LMC**  
**License Management Client**

KPT-300LMC is a required software package that is used to authenticate **software** (FPU) and **radio feature license** keys for the NX-5000 Series radios.

KPT-300LMC is available as a free download from <https://int.kenwoodusa.com> and is also supplied with applicable software, such as KPG-D1K, KAS-12, and KPG-AE1/DE1.

**NOTE:** A license key is required for the KPT-300LMC to authenticate the software prior to use. To receive a license key, complete an "Account Request Form" and return to the Land Mobile Order Desk.

Note: KPT-300LMC is compatible with Windows Vista/7/8/8.1/10 Only. Windows XP

License Keys will be E-Mailed to the address provided on the Account Request Form.

|            |                           |    |    |
|------------|---------------------------|----|----|
| KPT-300LMC | License Management Client | NC | NC |
| L-5000     | KPT-300LMC License Key    | NC | NC |

**SOFTWARE LICENSE OPTIONS**

**TO PLACE AN ORDER FOR SOFTWARE:**

1. Complete a Software License Key Request Form.
  2. Submit along with your PO to the Land Mobile Order Desk via:
    - a) E-Mail: [coca@us.jvckenwood.com](mailto:coca@us.jvckenwood.com)
  3. License Keys will be E-mailed to the address provided on the order form. A hard copy will follow by mail for your records.
- Note: A unique license key is required for each PC with software installed. A single license key will not authorize multiple PCs.**

**FIELD PROGRAMMING UNIT (FPU)**

KPG-D1K License Key for KPG-D1K Programming Software for NX-5000 Portable/Mobile (Windows® Vista/7/8/8.1)  
**Note: Requires KPT-300LMC for authentication**

**P25 Trunked Programming Capability (licensed by either 1 or 2 below):**

**1. USB Key Type: Advanced System Key (ASK)- See KWD-ASK-MK and AK**

- For NX-5000 series radios.
- KWD-ASK-MK (Master Key): For trunked system operator (SYSOP). Required for activating KWD-ASK-AK Access keys. Securely embeds/encrypts the HSID.
- KWD-ASK-AK (Access Key): For Dealers/contractors. Activated by KWD-ASK-MK Master Key.
- KPG-D1K supports up to 16 KWD-ASK-AK Access Keys (16 trunked networks).

**2. Software Key Type: System Key File (SKF)- See L-5005**

- For NX-5000 series radios.
- 3-digit HEX System ID (HSID) with verifiable written authorization required from SYSOP.
- Utilized by both SYSOPs and Dealers/Contractors. But Dealers/Contractors must be permitted from SYSOP to order and use SKF.
- Kenwood ships an encrypted \*.SKF file via E-Mail to the address provided on the P25 Trunking System Keys Request Form.
- The \*.SKF securely embeds/encrypts the HSID.

NEXEDGE®



## NX-5700/5800/5900

VHF/UHF/700/800MHz Digital & FM Analog Mobile Radios

### OVER THE AIR PROGRAMMING (OTAP)

KPG-180AP OTAP Manager Software  
• License includes 50 radios / 1 NXDN Conventional and Type-C Air Communication Profile

**Note:**

- Requires KPT-300LMC for authentication.
- Radio to Radio OTAP for P25 Conventional system requires KWD-AP3-P25 license.
- To add more radios/communication profiles, you must contact Kenwood.

### RADIO FEATURE LICENSE OPTIONS

PCs registered under the same KPT-300LMC Account Registration Key (License Key) will be able to authentic Radio Features that can then be viewed / shared / managed by all registered users for the account.

**\* TO PLACE AN ORDER FOR RADIO FEATURE LICENSES:**

1. Complete a Radio Feature Request Form.
2. Submit the completed form along with your PO to the Land Mobile Order Desk via:
  - a) E-Mail: coca@us.jvckenwood.com
3. License Keys will be E-mailed to the address provided on the request form. A hard copy will follow by mail for your records.

*Note: Radio Feature License Keys can be transferable from a radio to radio within 72 hours count started from being authenticated to a Radio. Once license transferred radio is authenticated by KPT-300LMC, 72 hours is reset and count started from first.*

#### General Radio Features

|            |  |
|------------|--|
| KWD-5000CH | License Key for 4000 Channel Expansion   |
| KWD-5001FP | License Key for Front Panel Programming  |
| KWD-5002SD | License Key for microSD Memory Card Slot Activation  |
| KWD-5003BT | License Key for Bluetooth Serial Port Profile (Required for Data Communication)<br><b>Note:</b> Voice Communication for Bluetooth Head Set does NOT need KWD-5003BT.<br><i>You can pair with any Bluetooth audio device without this option.</i> |
| KWD-5004MR | License Key for Multiple RF Decks Receiver<br><b>Note:</b> Required <b>ONLY</b> for the radios with S/N: B5900000 or earlier.  |

#### P25 Radio Features

|            |   |
|------------|---|
| KWD-5100CV | License Key for P25 Conventional  |
| KWD-5101TR | License Key for P25 Phase 1 Trunking (requires KWD-5100CV)  |
| KWD-5102TR | License Key for P25 Phase 2 Trunking (requires KWD-5100CV & KWD-5101TR)   |
| KWD-5103RK | License Key for P25 OTAR (requires KWD-5106DT for a Trunking Operation)   |
| KWD-5105VT | License Key for P25 Conventional Voting Scan  |
| KWD-5106DT | License Key for P25 Trunking OTAR/GPS Data<br><b>Note:</b> Conventional (OTAR/GPS) does NOT require KWD-5106DT. |



# NX-5700/5800/5900

VHF/UHF/700/800MHz Digital & FM Analog Mobile Radios

## ENCRYPTION MODULES

|           |   |
|-----------|---|
| KWD-AE30K | AES FIPS140-2 & DES Encryption Module (Multi-Key)<br>Order a Labor Code <b>L-5007</b> if installation is required.<br>KWD-AE30K requires: a Motorola KVL3000 Plus/4000 key loader device.<br>KWD-AE30K is an U.S. DOC/BIS Export Controlled Item (ECCN 5A002A.1)                          |
| KWD-AE31K | AES & DES Encryption Module (Multi-Key)<br>Order a Labor Code <b>L-5008</b> if installation is required.<br><b>Note:</b> Requires KPG-AE1/DE1 software key loader or Motorola KVL3000 Plus/4000 key loader device.<br>KWD-AE31K is an U.S. DOC/BIS Export Controlled Item (ECCN 5A002A.1) |
| KPG-AE1K  | AES/DES Encryption Software Key Loader for KWD-AE31K<br><b>Authentication by KPT-300LMC is required</b><br><b>Note:</b> KPG-AE1 is a U.S. DOC/BIS Export Controlled Item (ECCN 5D002A)  |
| KPG-DE1K  | DES Encryption Software Key Loader for KWD-AE31K<br><b>Authentication by KPT-300LMC is required</b><br><b>Note:</b> KPG-DE1 is a U.S. DOC/BIS Export Controlled Item (ECCN 5D992A.1)  |

## SERVICE RELATED ACCESSORIES

|            |   |
|------------|---|
| KPG-46XM   | Full Speed USB Programming interface cable  |
| KPG-115    | Key Loader Interface Cable for Motorola KVL-3000/3000 Plus/4000   |
| KPG-115AUT | KVL-4000 Radio Authentication Cable <b>[Available in 2016 1Q]</b>   |
| KWD-ASK-AK | Access Key for KPG-D1K P25 trunked programming<br><b>Notes:</b> Enables P25 Trunked system programming privileges in a KPG-D1K.<br><ul style="list-style-type: none"> <li>• For NX-5000 series only</li> <li>• Must be activated by trunked system operator (SYSOP) with KWD-ASK-MK Master Key</li> <li>• Must have KPG-D1K</li> <li>• Configurable expiration period of KWD-ASK-AK set by KWD-ASK-MK is available for 3 years for built in battery. USB Key must be replaced since the expiration set up dose not work after 3 years.</li> </ul> |
| KWD-ASK-MK | Master Key for activating KWD-ASK-AK Access Keys<br><b>- Restricted Purchase Requirements -</b><br><b>Notes:</b><br><ul style="list-style-type: none"> <li>• For NX-5000 series only.</li> <li>• Sold to trunked system operator (SYSOP) or SYSOP authorized entities only</li> <li>• Must have KPG-D1K</li> <li>• SYSOP must provide 3-digit HEX HSID to Kenwood with P25 Trunking System Keys Request Form.</li> <li>• Purchase KWD-ASK-AK Access Keys if needed.</li> </ul>  |

## INSTALLATION / TUNING CHARGES

|        |  |
|--------|--|
| L-5000 | Account Registration Key<br><b>Note:</b> specify the number of PC's used for Radio Feature License Activation.   |
| L-5001 | Factory Activation of Radio Feature Licenses (per Radio)<br><b>Note:</b> Must purchase Radio Feature Licenses separately.<br><b>KPT-300LMC's History Menu will not display the Radio Features activated by Factory.</b>  |
| L-5006 | NX-5700/5800 Programming (with basic TX/RX check)  |
| L-5007 | Install KWD-AE30K in NX-5000 series Mobile<br>(Must purchase module separately)  |
| L-5008 | Install KWD-AE31K in NX-5000 series Mobile<br>(Must purchase module separately)  |
| L-5005 | KPG-D1K System Key File (SKF)<br><b>Note:</b> Enables P25 Trunked system programming privileges in a KPG-D1K.<br><b>- Restricted Purchase Requirements -</b><br><ul style="list-style-type: none"> <li>• Trunked system operator (SYSOP) must provide 3-digit HEX HSID to Kenwood with P25 Trunking System Keys Request Form.</li> <li>• Must have KPG-D1K.</li> <li>• Kenwood ships an encrypted *.SKF file via E-Mail to the address provided on the P25 Trunking System Keys Request Form.</li> <li>• Non-SYSOP entities ordering L-5005 must provide verifiable written authorization from SYSOP to receive an *.SKF file.</li> <li>• 3-digit HEX HSID are securely encrypted &amp; embedded in the *.SKF file.</li> </ul> |
| L-5015 | Install KAP-2 (Default) HR1/Internal Sp./PA  |
| L-5016 | Assemble NX-5000 Mobile for Single Remote Head Control   |

NEXEDGE®



# NX-5700/5800/5900

VHF/UHF/700/800MHz Digital & FM Analog Mobile Radios

## INSTALLATION / TUNING CHARGES (cont.)

|        |   |
|--------|---|
| L-5020 | KCT-71 Extended Control Head Cable (up to 50 ft. max.)<br><b>Note:</b> Please specify exact length at 1ft. increments when ordering.<br><b>Caution:</b> Extended control head cables exhibit a loss in speaker audio power to the control heads.  |
| L-5021 | KCT-71 Extended Control Head Cable (up to 100 ft. max.)<br><b>Note:</b> Please specify exact length at 1ft. increments when ordering.<br><b>Caution:</b> Extended control head cables exhibit a loss in speaker audio power to the control heads. |
| L-5029 | Package Single Deck Single Head Remote<br>(MUST purchase NX-5x00(B) RF Deck and the Kit with this labor for full installation)  |
| L-5030 | Package Single Deck Dual Head Remote<br>(MUST purchase NX-5x00(B) RF Deck and the Kit with this labor for full installation)  |
| L-5031 | Package Dual Deck Single Head Remote<br>(MUST purchase NX-5x00(B) RF Decks and the Kit with this labor for full installation)<br><b>Note: MUST submit the Remote Mount Configuration Request Form.</b>  |
| L-5032 | Package Dual Deck Single Head Dual Speaker Remote<br>(MUST purchase NX-5x00(B) RF Decks and the Kit with this labor for full installation)<br><b>Note: MUST submit the Remote Mount Configuration Request Form.</b>                               |
| L-5033 | Package Dual Deck Dual Head Single Speaker Remote<br>(MUST purchase NX-5x00(B) RF Decks and the Kit with this labor for full installation)<br><b>Note: MUST submit the Remote Mount Configuration Request Form.</b>                               |
| L-5034 | Package Dual Deck Dual Head Dual Speaker Remote<br>(MUST purchase NX-5x00(B) RF Decks and the Kit with this labor for full installation)<br><b>Note: MUST submit the Remote Mount Configuration Request Form.</b>                                 |
| L-5035 | Package Triple Deck Single Head Single Speaker Remote<br>(MUST purchase NX-5x00(B) RF Decks and the Kit with this labor for full installation)<br><b>Note: MUST submit the Remote Mount Configuration Request Form.</b>                           |
| L-5036 | Package Triple Deck Single Head Triple Speaker Remote<br>(MUST purchase NX-5x00(B) RF Decks and the Kit with this labor for full installation)<br><b>Note: MUST submit the Remote Mount Configuration Request Form.</b>                           |
| L-5037 | Package Triple Deck Dual Head Single Speaker Remote<br>(MUST purchase NX-5x00(B) RF Decks and the Kit with this labor for full installation)<br><b>Note: MUST submit the Remote Mount Configuration Request Form.</b>                             |
| L-5038 | Package Triple Deck Dual Head Triple Speaker Remote<br>(MUST purchase NX-5x00(B) RF Decks and the Kit with this labor for full installation)<br><b>Note: MUST submit the Remote Mount Configuration Request Form.</b>                             |

### -- IMPORTANT NOTES regarding ENCRYPTION MODULES--

Encryption modules, key loaders and radios containing encryption are export controlled by the U.S. Department of Commerce Bureau of Industry & Security EAR regulations and may either require an Export License, are eligible for a License Exception (ENC) or are exportable with No License Required (NLR) depending on the country, the consignee and the intended use. High level encryption is a special commodity that may require an export license to most countries. See [www.bis.gov](http://www.bis.gov) for more information regarding export regulations. DO NOT SHIP encryption items outside the U.S. without proper DOC/BIS Export Licenses and/or compliances.

Kenwood may request the following information to be submitted at time of order (this information must meet Kenwood internal approvals prior to shipment even if being returned to Kenwood later:

**a) Initial Destination:** Initial delivery point if different from Ultimate Destination  
(customer distribution center, headquarters, dealership, manufacturer's representative)

\* Business/Agency Name:

\* Address:

\* Contact Person Name:

\* Contact Phone:

**b) Ultimate Destination:** Final delivery point(s); deployment/distribution

\* Business/Agency Name:

\* Address:

\* Contact Person Name:

\* Contact Phone:

**c) Intended Use of Radios:** Law enforcement, security, operations, etc.

### KWD-AE30 AES FIPS140-2 SCM , NIST Validation & Customer Shipping

A secure delivery method direct to the end user customer is required by the NIST AES FIPS 140-2 validation rules. For U.S. Federal Government entities the SCM must ship from Kenwood USA Corporation directly to the end user customer by a trusted carrier (FEDEX, UPS or a designated Kenwood USA Corporation employee); shipping/handling by a dealer or other entity is not acceptable. This may or may not be required by local/state government agencies or business/industrial users. Please check with the end use customer about their AES encryption handling requirements before ordering. Kenwood will not be responsible for shipments of KWD-AE30K modules to erroneous destinations specified on an order.