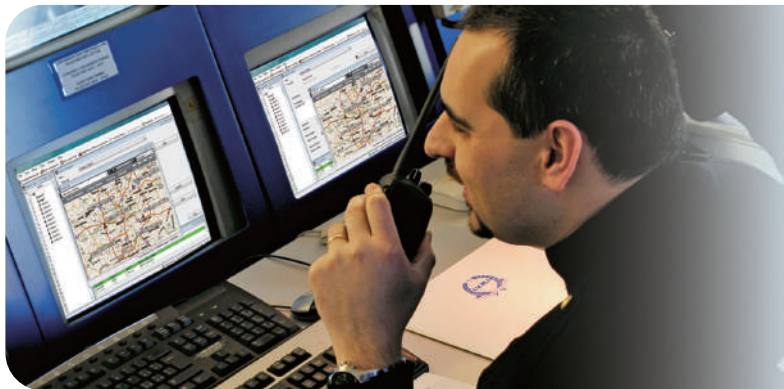


KENWOOD

Listen to the Future



KAS-10

AVL & Dispatch Software

5-tone **NXDN** **FleetSync**
by KENWOOD

GENERAL

- 250 Mobile ID Capacity¹
- FleetSync[®] Messaging & AVL²
- NEXEDGE[®] Digital Messaging & AVL²
- Analog Conventional & LTR[®] Trunked Operation
- NXDN[®] Conventional & Trunked Operation
- MDI (Multiple Document Interface) window
- Imported JPEG, BMP, GIF, EMF or WMF Image Maps³
- Microsoft[®] MapPoint[®] 2006 European Maps Compatible³

5-Tone/ FleetSync[®] / NEXEDGE[®] Digital Dispatch Signalling & Messaging

- Call Types: Individual, Group, Broadcast (5-tone) / Individual, Fleet, Group, Broadcast, Supervisor (FleetSync[®]) / Individual, Conference Group, Broadcast Group⁴, Conference All, Broadcast All⁴ (NEXEDGE[®] Digital)
- Max. 86 (5-tone) / Max. 70 (FleetSync[®]) / Max. 207 (NEXEDGE[®] Digital) Custom Status Messages (25 alphanumeric characters)
- Emergency
- Emergency Man-Down (NEXEDGE[®] Digital and FleetSync[®])
- Stun / Remote Kill
- Text Messages up to 4,096 alphanumeric characters⁵
- Max. 20 pre defined Text Message List

- Status Message Request
- Horn Alert

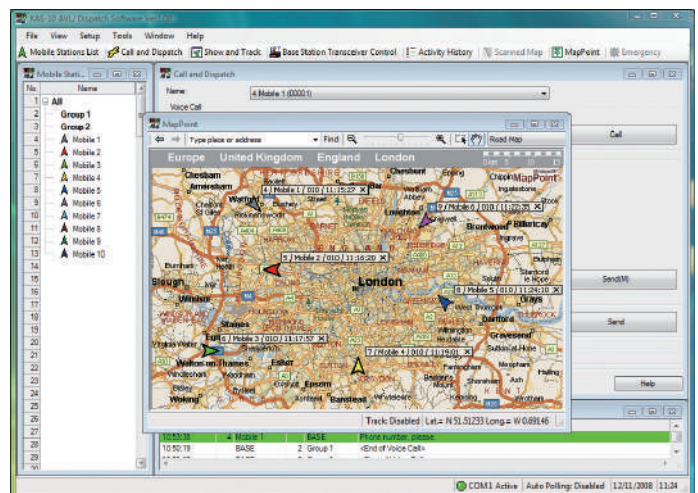
Windows[®] OS Graphical Interface

- Independent Window Dedicated for Dispatch or AVL Operation
- 20 Colored Mobile Icons⁶
- 30 Status Icons & Emergency Icon⁶
- Import user definable icons
- Screen View & Navigation Functions
- Quick Access & Shortcut Keys
- Mobile Station Tree View List
- Mobile Icon Tags (name, unit ID, status message No., speed, GPS status, time)
- Activity History Grid with Color-Coded Call Indications
- Emergency Panel Alerts
- Mouse Map Scrolling
- Map Zoom In & Out / Centering / Default Map Position
- View & Track Selected or All Mobiles
- MapPoint[®] Toolbars / Map Font (5 sizes)⁷
- Show / Hide Places MapPoint only
- Alphanumeric Text Message Send/Receive Display
- Recall Historical Text Messages
- Send Voice Call
- Send Position Request
- Find Location Feature (address, place/data, LAT & LONG)⁷

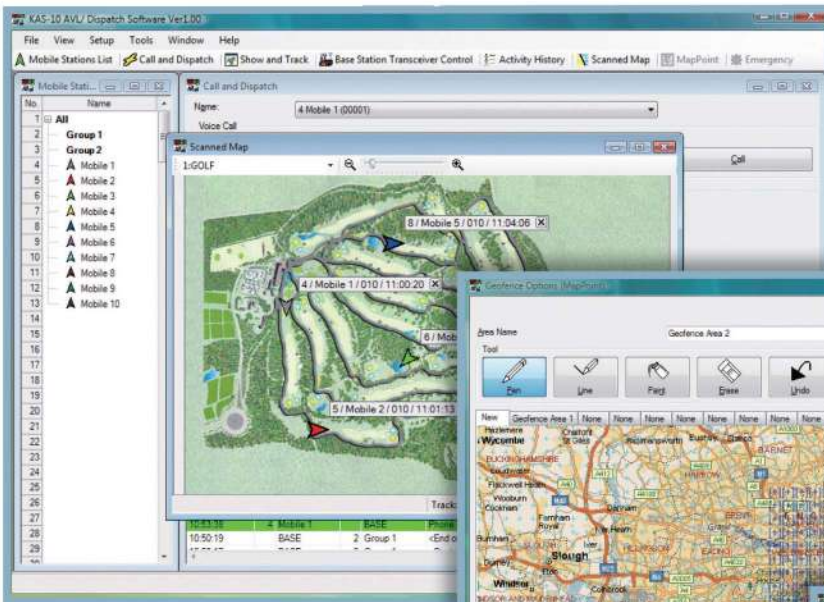
Administrative Management Features

- Administrator Setup Password Protected
- Auto Polling / Auto Reporting
- Speed Restrictions Warning
- Geofence – Alert System for Area Management
- Historical Logging & File Playback (position report, voice call, text message, status message, geofence warning, speed restrictions warning)

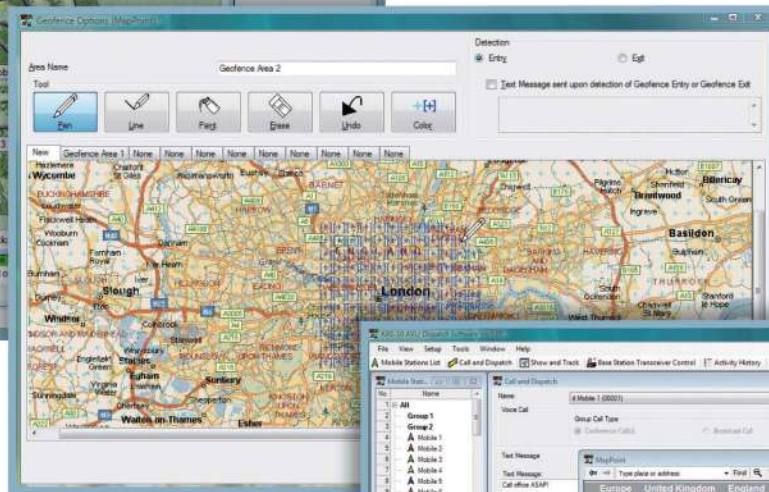
- Emergency & Man-Down Log File Review
- WAV File Import for Emergency, Geofence Warning, Speed Restrictions Warning and New Messages
- Default Position
- Out of range – No TX or RX during fixed period of time, the color of characters in the Mobile Stations List changes to gray
- Log Data Database



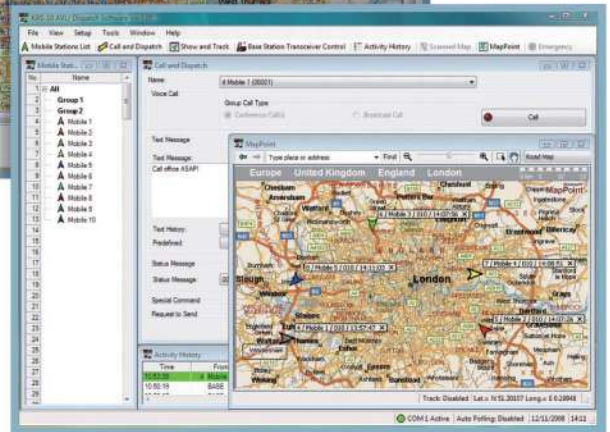
AVL (MapPoint[®]) Screen



AVL (Scanned Map) Screen



Geofence Screen



AVL Dispatch

Radio Model Compatibility

- Base Stations
TK-7180/8180, TK-7189/8189, NX-700/800
- Fleet Radio (with GPS options installed)
TK-7180/8180, TK-7189/8189, NX-700/800, TK-7160/8160⁹
TK-2180/3180, NX-200/300

Base / Control Station Requirements

- Compatible Kenwood mobile radio
- PC-to-Mobile Serial Interface Cable (purchase separately)
- KMC-9B/9C Desktop Base Microphone (voice call use)⁹

Fleet Radio Requirements

- Compatible Kenwood mobile or portable radios
- Internal or external GPS Receiver & Antenna (mobiles)
- KMC-38 GPS Speaker Microphone (portables)

PC Software / Hardware Requirements

- Microsoft® Windows® XP Professional Edition SP2 or later
Microsoft® Windows Vista® Business SP1 or later
Microsoft® Windows Vista® Ultimate SP1 or later
- Microsoft® MapPoint® 2006 Software (purchase separately) or Imported Maps³
- Intel® Pentium® III 1GHz (minimum)/Intel® Pentium® 4 2GHz or higher (recommended), 256MB (minimum) or 512MB and more (recommended) memory, 100MB HDD free space³, CD-ROM, DVD-ROM, Serial Port, XGA (1024 x 768)

Kenwood follows a policy of continuous advancement in development. For this reason specifications may be changed without notice.

FleetSync® is a registered trademark of Kenwood Corporation.

NEXEDGE® is a registered trademark of Kenwood Corporation.

NXDN® is a registered trademark of Kenwood Corporation and Icom Inc.

LTR® is a registered trademark of Transcrypt International.

Microsoft®, Windows®, Windows Vista®, MapPoint® and Windows® logo are trademarks of Microsoft Corporation in the U.S. and other countries.

Intel® and Pentium® are trademarks of Intel Corporation in the U.S. and other countries.

Footnotes:

- 1 250 Mobile Tracking: Practical fleet size may vary depending on type system, system loading, mobile poll/report rates, mixed voice/data or dedicated data channel usage. Supports single base station operation only. KAS-10 does not support single or multi-operator positions via IP-networks.
- 2 KAS-10 operates in either FleetSync® analog or NEXEDGE® digital mode, but not both in the same installation (use of FleetSync® PC Serial Interface (protocol 2) or NEXEDGE® PC Serial Interface required). KAS-10 does not support: Remote Check, Remote Group Add or NEXEDGE® Over-the-Air Alias decode for PTT ID (per pre-programmed alias list only). KAS-10 encodes FleetSync® Short/Long Text Messages and NEXEDGE® Short / Long Data Messages, but subscriber unit storage / LCD display is limited to short messages. Long messages are output in the PC serial interface for use by compatible applications/hardware. The KDS-100 FleetSync® Mobile Data Unit is not compatible with NX subscriber units for analog FleetSync® or NXDN® signalling and messaging.
- 3 KAS-10 does not require MapPoint® to run. Imported JPG, BMP, GIF, WMF and EMF files can also be used. Compatible with MapPoint® North American Maps (English) or European Maps (English, French, German, Italian or Spanish) versions. MapPoint® 2006 requires 1.2 GB HDD space. The GPS Locator antenna/GPS engine accessory supplied with MapPoint® cannot be connected to a Kenwood mobile.
- 4 NEXEDGE® Digital Trunking only.
- 5 Max number of character will vary depends on the radio model. Longer messages using Short message type will use multiple stacks to send all characters.
- 6 Custom mobile/status icon images can be created with icon creating software (*.ico files) and imported for use.
- 7 MapPoint® only.
- 8 Text Messaging is not available on these models.
- 9 KMC-9B/9C requires internal modification (contact Kenwood tech support).

Listen to the Future

Kenwood has always connected with people through sound. Now we want to expand the world of sound in ways that only Kenwood can, listening to our customers and to the pulse of the coming age as we head toward a future of shared discovery, inspiration and enjoyment.

Kenwood Electronics UK Limited

Kenwood House, Dwight Road, Watford, Herts. WD 7 8 9EB, United Kingdom

www.kenwood-electronics.co.uk

