

GENERAL FEATURES

- 999 Mobile ID Capacity
- FleetSync® or NEXEDGE® Messaging & AVL
- Analog Conventional & LTR® Operation
- NEXEDGE® Conventional / Trunked / Trunked IP Network Operation
- Imported JPEG, BMP, GIF, EMF or WMF Image Maps
- Microsoft® MapPoint® 2006/2009/2010/2011 North American Maps Compatible
- Google Earth™ Maps (KMF Output)

GENERAL DISPATCH FEATURES

- Stun / Remote Kill / Emergency / Man-Down
- Text Messages
- 20 Pre-defined Text Message List
- Status Message Request
- Horn Alert
- Lone Worker (FleetSync® & NEXEDGE®)

ANALOG DISPATCH MESSAGING

- Voice Call (FleetSync®): Individual, Fleet, Group, Broadcast, Supervisor
- 70 Custom Status Messages

NEXEDGE® DIGITAL MESSAGING

- Voice Call (NXDN®) : Individual, Group, Broadcast
- 207 Custom Status Messages
- Remote Monitor & Remote Re-Grouping

NEXEDGE® TRUNKED IP NETWORK OPERATION

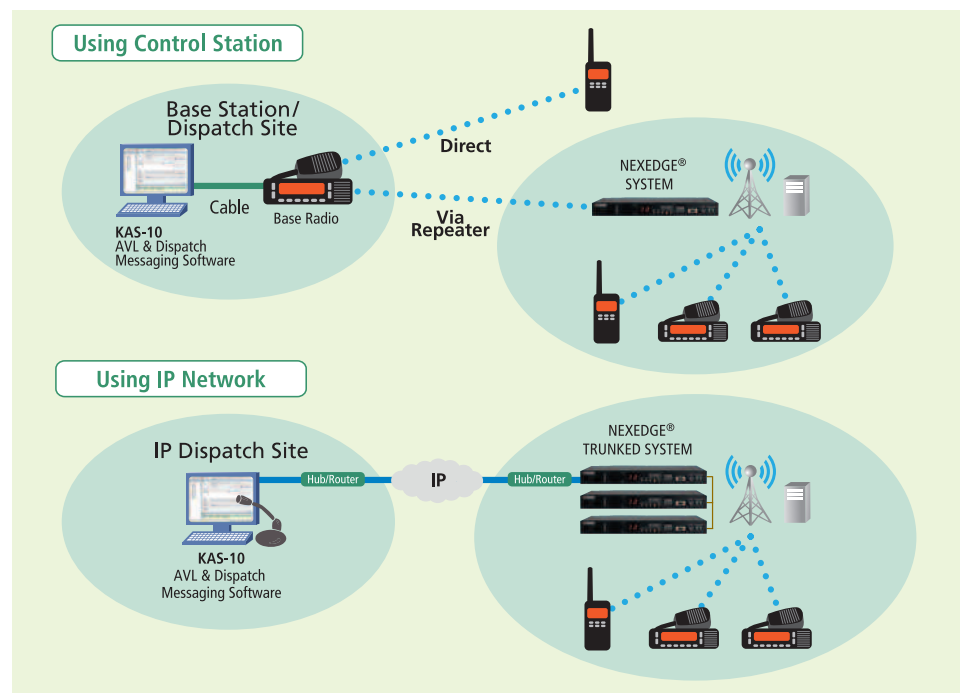
- AVL & Dispatch Operation Over IP
- Up to 10 KAS-10 per Trunked Site
- Up to 100 KAS-10 per Trunked Network
- Digital Voice Systems, Inc. USB-3000™ AMBE+2™ (Required)
- 100 Group Scan with 4 Priority Monitor ID's
- NXDN® Voice Scrambling

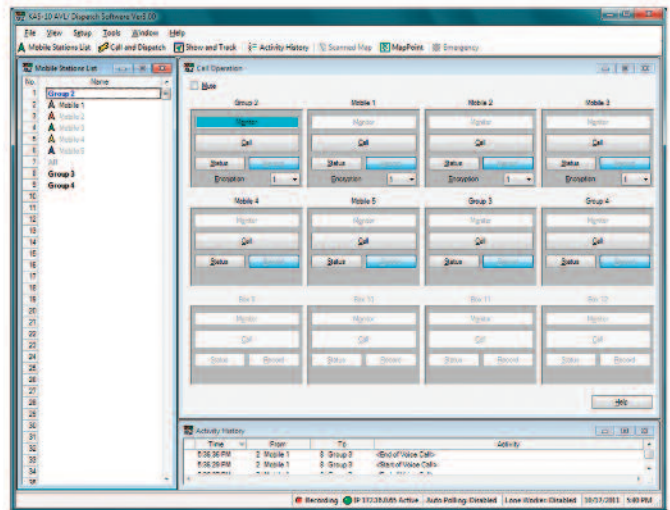
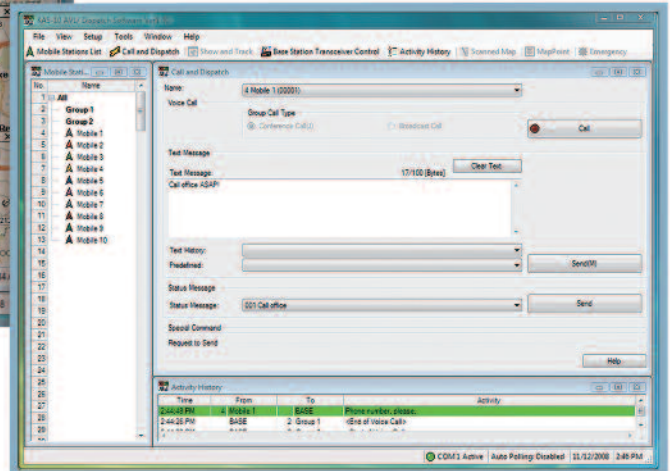
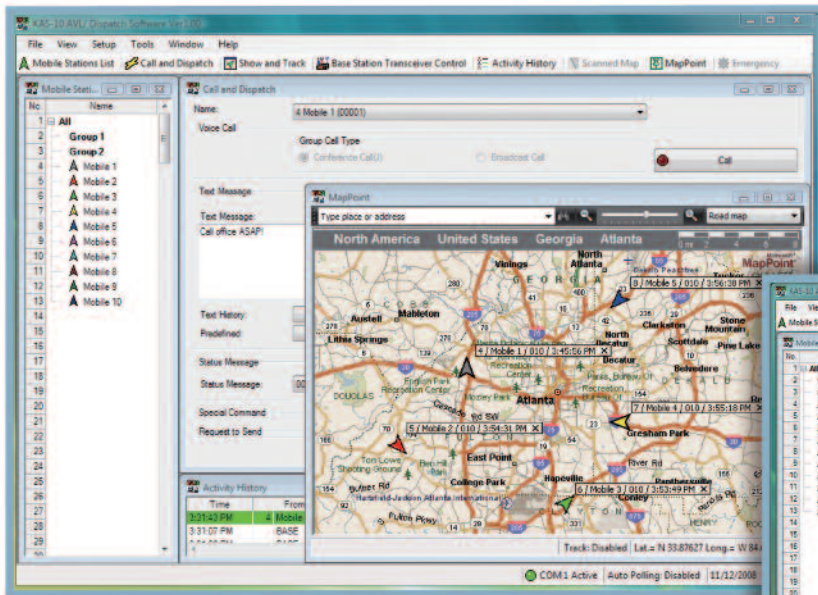
OPERATORS GRAPHICAL INTERFACE

- Independent Dispatch & AVL Screens
- Integrated Call Operation Windows
- 20 Vehicle, 30 Status & Emergency Icons
- Mobile Icon Tags (name, unit, status message, time, speed, GPS status)
- Emergency Panel Alerts
- View & Track Selected or All Vehicles
- Alphanumeric Text Message Send/Receive Display
- Send Voice Call
- PTT Momentary / Lock Control
- Send Position Request
- Find Location Feature (address, place/data, LAT & LONG)

ADMINISTRATIVE ASSISTANT

- Administrator Password Protection Setup
- Auto Polling / Auto Reporting
- Speed Restrictions Warning
- Geofence – Alert System for Area Management
- Historical Logging & File Playback
- Emergency & Man-Down Log File Review
- WAV File Import for Warning and New Messages
- In Coming / Out Going Voice Record & Play
- Sent Message Queue





BASE/CONTROL STATION REQUIREMENTS

- Compatible Kenwood radio with FleetSync® or NEXEDGE® Signalling & Messaging
- PC Serial Interface Cable (purchase separately)
- Optional KMC-9B/9C Desktop Base Microphone for mobile radio

FLEET RADIO REQUIREMENTS

- Compatible Kenwood mobile or portable radios
- Internal or external GPS with Antenna (Mobile)
- GPS Speaker Microphone (Portable)

PC SOFTWARE/HARDWARE REQUIREMENTS

- Microsoft® Windows® XP/Vista/7 (32/64 bit) operating system
- Microsoft® MapPoint® 2006 / 2009 / 2010 / 2011 Software (purchase separately) or Imported Maps
- Intel® Pentium® III 1GHz (minimum) / Intel® Pentium® 4 2GHz or higher (recommended), Intel® Pentium® 4 3GHz or higher (required for IP Network Operation) 256MB (minimum) or 512MB and more (recommended) memory, 100MB HDD free space, CD-ROM, DVD-ROM, Serial Port, XGA (1024 x 768)
- Digital Voice Systems, Inc USB-3000™ AMBE+2™ Vocoder for IP Network Operation (purchase separately)
- External PC Microphone and Speaker required for IP Network Operation (purchase separately)

Specifications are subject to change without notice, due to advancements in technology

FleetSync® is a registered trademark of JVC KENWOOD Corporation.

NEXEDGE® is a registered trademark of JVC KENWOOD Corporation.

NXDN® is a registered trademark of JVC KENWOOD Corporation and Icom Inc.

LTR® is a registered trademark of Transcript International.

Microsoft®, Windows®, Windows Vista®, MapPoint® and Windows® logo are trademarks of Microsoft Corporation in the U.S. and other countries.

Intel® and Pentium® are trademarks of Intel Corporation in the U.S. and other countries.

Google Earth™ is a trademark of Google Inc.

Note: Downloading, installation or using Google Earth software or using service is subject to Google Inc. Terms of Service, Legal Notices and Additional Terms.

AMBE+2™ is a trademark of Digital Voice Systems, Inc.

KENWOOD

Kenwood U.S.A. Corporation
 Communications Sector Headquarters
 3970 Johns Creek Court, Suite 100, Suwanee, GA 30024-1265
Order Administration/Distribution
 P.O. BOX 22745, 2201 East Dominguez St., Long Beach, CA 90801-5745

Kenwood Electronics Canada Inc.
 Canadian Headquarters and Distribution
 6070 Kestrel Road, Mississauga, Ontario, Canada L5T 1S8
 www.kenwood.ca


 www.kenwood.com



ISO9001 Registered
 Communications Equipment Division
 Professional Systems Business Group
 JVC KENWOOD Corporation

ADS#56011 Printed in USA